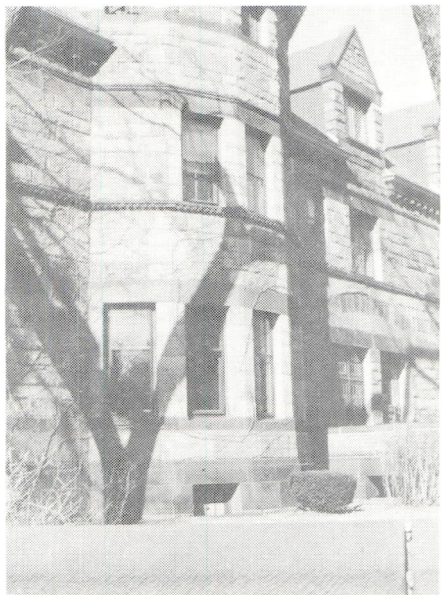


Old Cambridge

Compiled by
M. David Samson and Bettina A. Norton

Photographed by Bettina A. Norton





F1. Substantial house, now
a house no longer



F2. A twisted-column porch



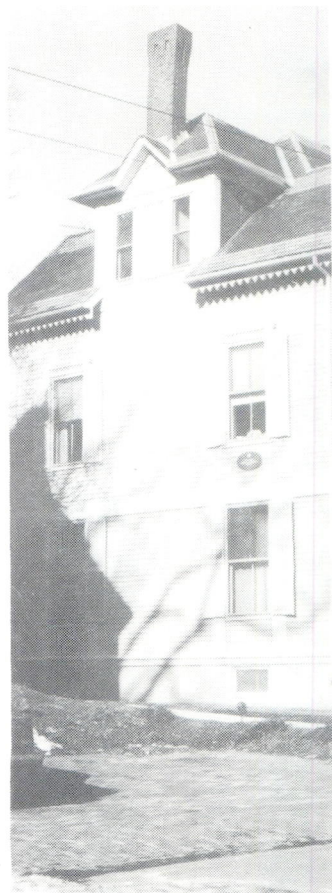
F3. Double house, with cat
(cat's name not
necessary!)



F4. Greek Revival house, with
mansard roof



F5. Patterned shingled house, with cat
(cat's name not necessary!)



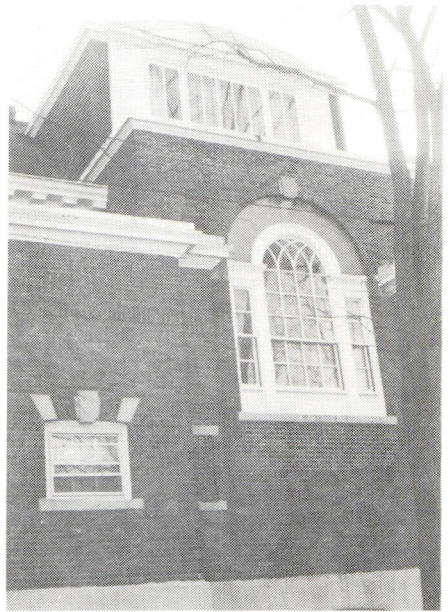
F6. Chimney side of a
famous historical
house



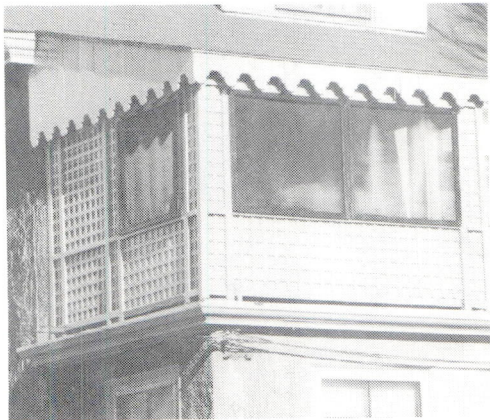
F7. Another double house with cat
(his name not necessary, either)



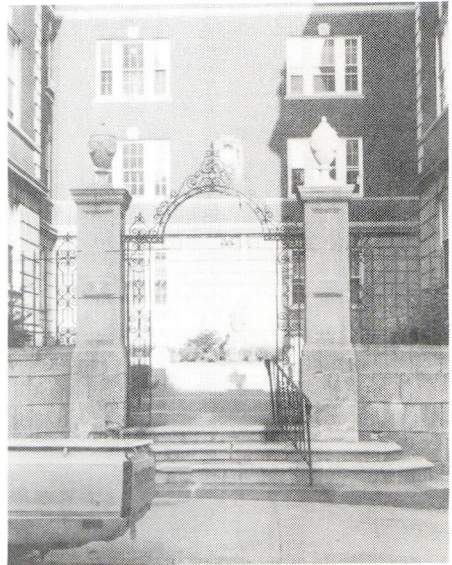
F8. "Shingle style" arch, with colonial style columns and oval window



F9. A burst of English Baroque



F10. Scalloped upper story porch



F11. Apartment entry, ca. 1910



F12. A "Gothic Revival" porch



F13. Handsome Italianate style



F14. Decorative porch



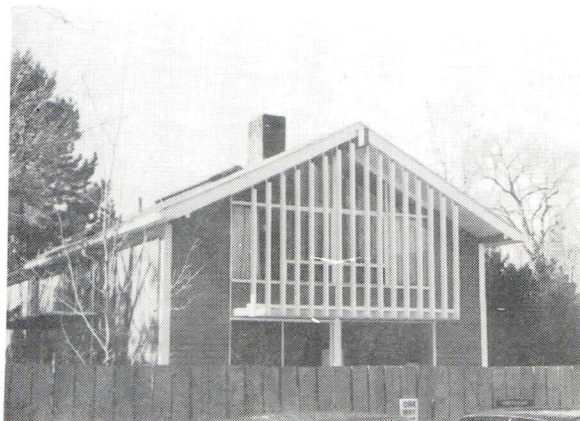
F15. Porch with spindles



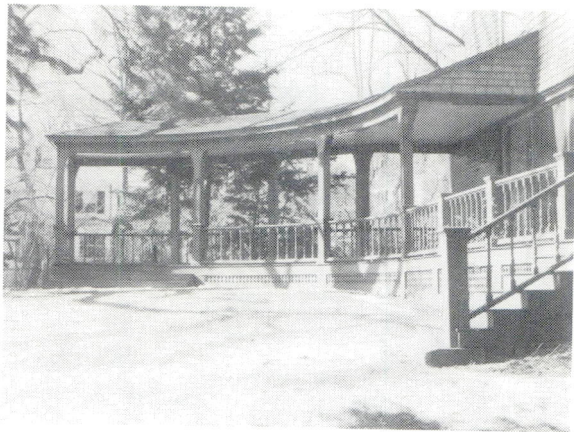
F16. Unusual gable style with diamond-pane windows



F17. Curving window hood in the gable



F18. Modern gable



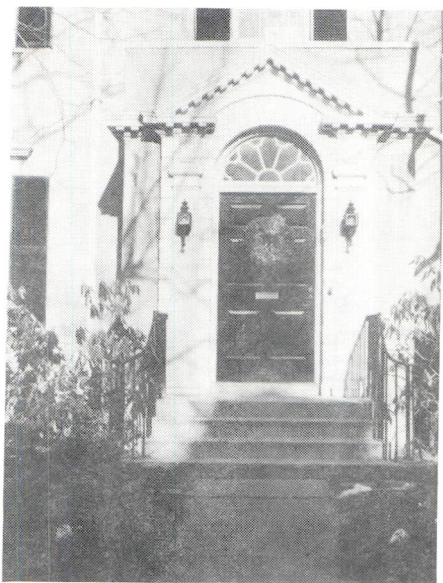
F19. A truly grand porch



F20. Porch across the whole front



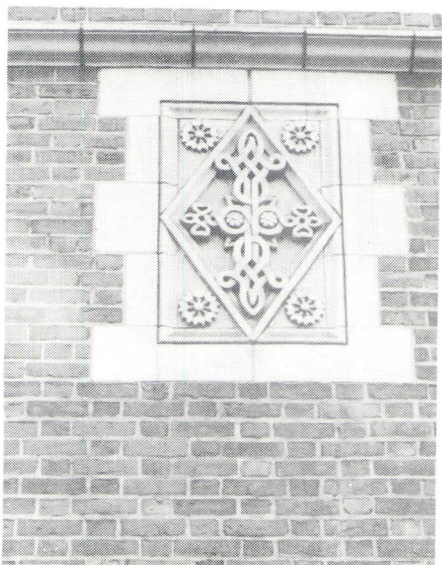
F21. A hefty shingle style porch



F22. An Anglo-Palladian entry



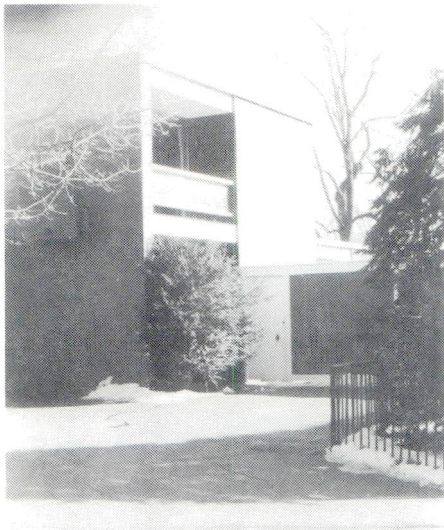
F23. Strange shapes galore



F24. Some "Celtic" decoration

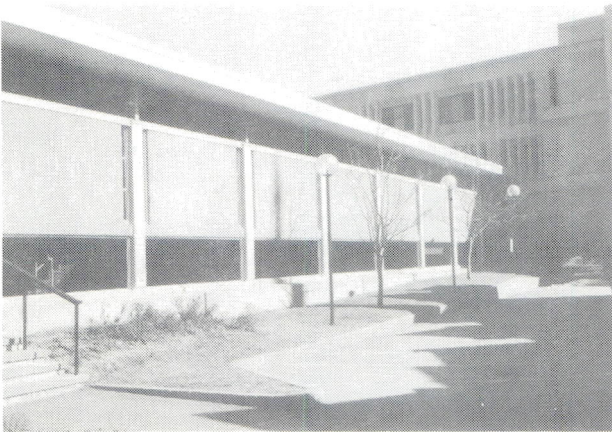


F25. Colonial Revival porch and windows



NOT ALL BUILDINGS IN
OLD CAMBRIDGE ARE OLD

F26. Inset balcony



F27. Early 1960s
architecture



F28. "Little Red
Schoolhouse"
gables



F29. Queen Anne style mansion



F30. English country Gothic style, NOT for a church



F31. Stick style house