

# Mid Cambridge

Compiled by  
George R. Metzger and Edward T. James

Photographed by  
Heddi Siebel Felix and John Felix

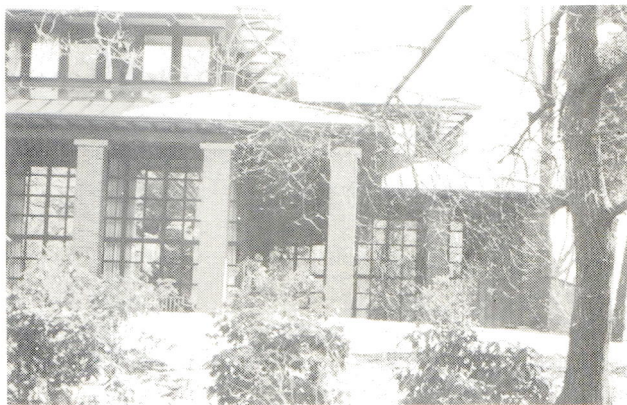




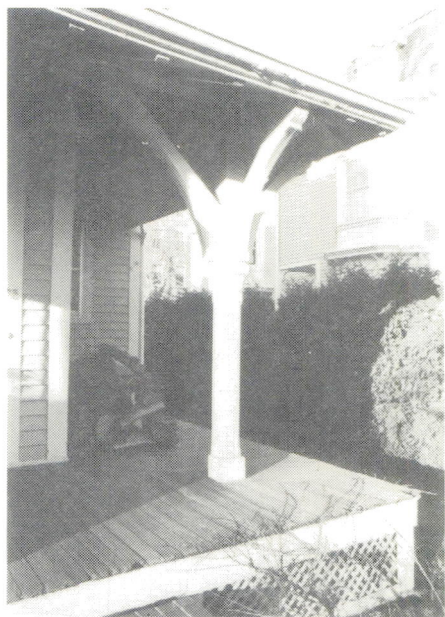
E1. Famous poet watches his court



E2. Radiating spindlework in a fancy porch gable



E3. Designed by the architects of  
Boston's City Hall



E4. An animated stone bracket    E5. A post whose importance has gone to its head



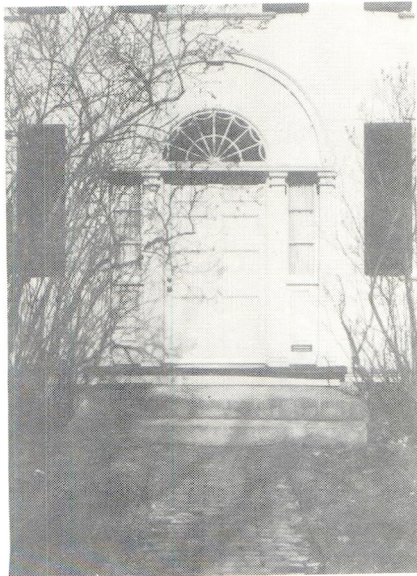
E6. Decorative iron work



E7. A very supportive entrance



E8. Simple carved pediment and "turned" posts



E9. Fan entrance on a Federal Revival



E10. "A home is a castle" - multi-family house made to look like a grand single home



E11. Porch with Victorian patternwork



E12. Italianate duplex with a few "modern" touches



E13. Timber style entrance with balusters in the gable



E14. Carved stone and brick entrance



E15. Festooned panels with attic fan  
in gambrel gable



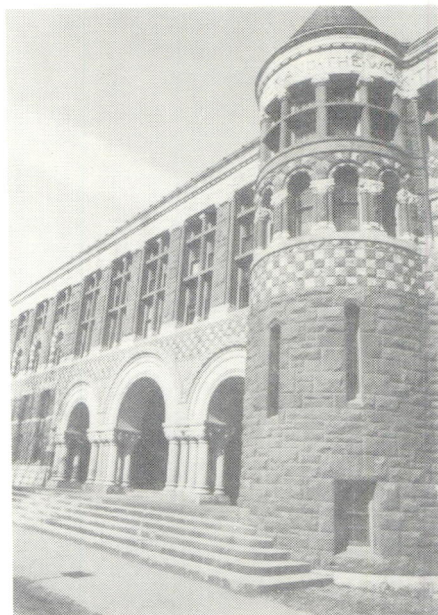
E16. A flat "bay" window



E17. "Broken pediment"  
window panel



E18. A shingle style triple-decker where Robert Redford courted Ali McGraw



E19. A sister to Trinity Church in Boston



E20. An old building with new life



E21. Unusual side-entrance house



E22. Half timbers and fancy shingle work on a Queen Anne house



E23. A room with a view from the bay



E24. Queen Anne, revived





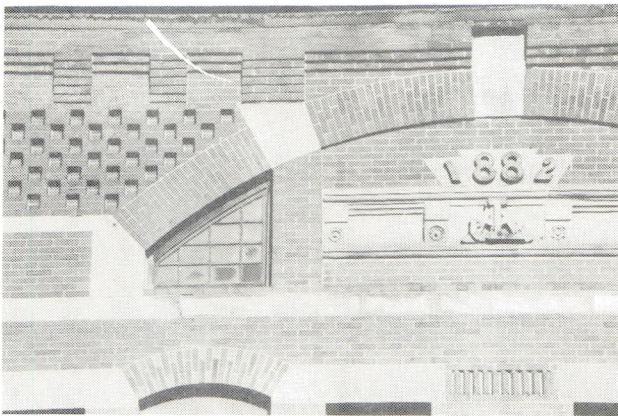
E25. English Queen Anne cottage in brick



E26. Quaint bungalow on a street of painted ladies



E27. Elaborate Gothic detail on a more "classical" form



E28. Skillful masonry work in a mercantile block



E29. An identifying frieze



E30. House always "in bloom"