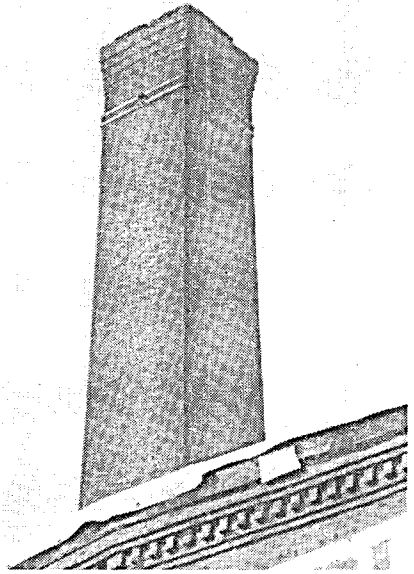
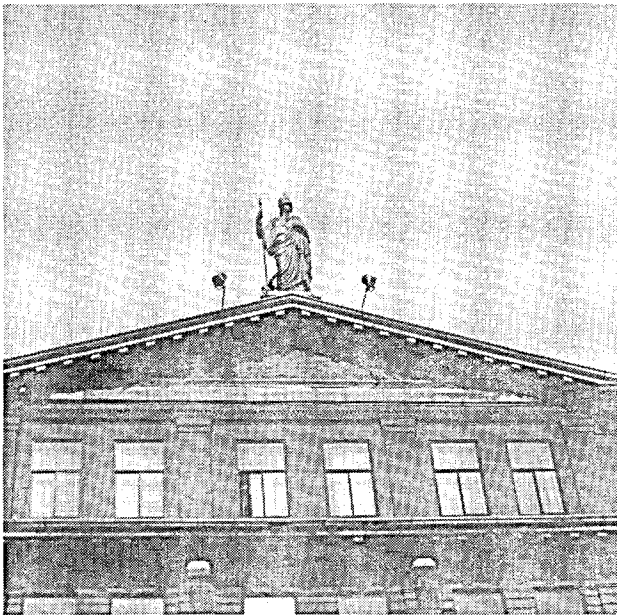


C1. Tower with dog



C2. Tower without dog



C3. Goddess of wisdom



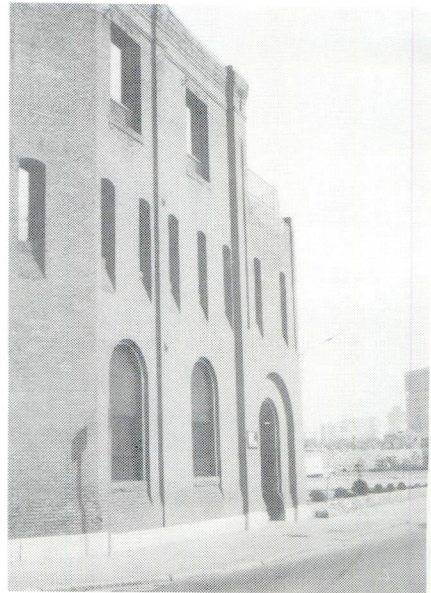
C4. Not so famous East Cambridge cupola



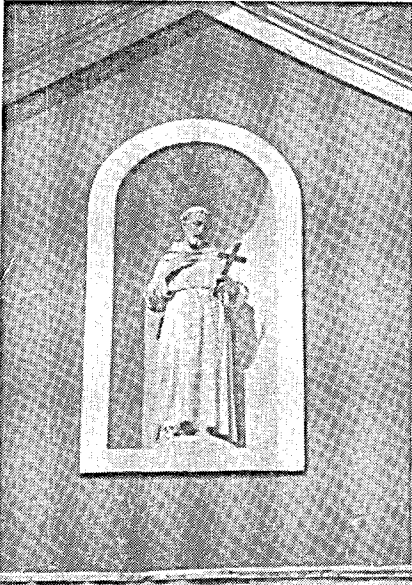
C5. Modern "silos"



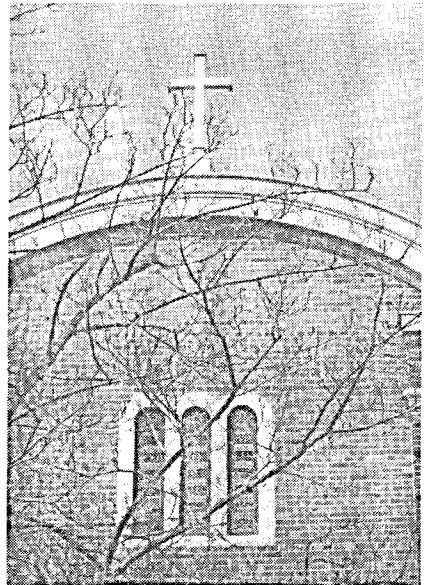
C6. Arcade of windows



C7. Graceful patterns from inset windows and doors



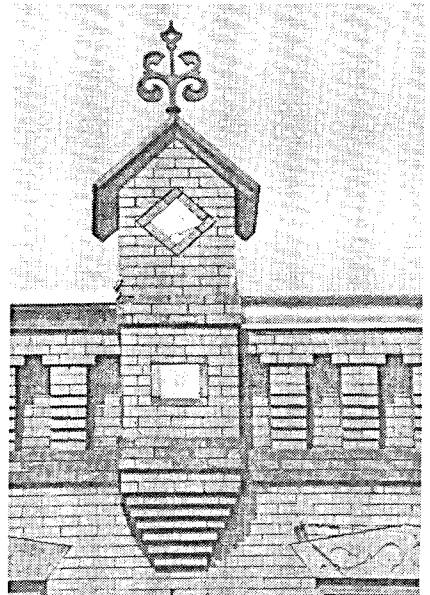
C8. Saint in a pediment



C9. Distinctive gold cross



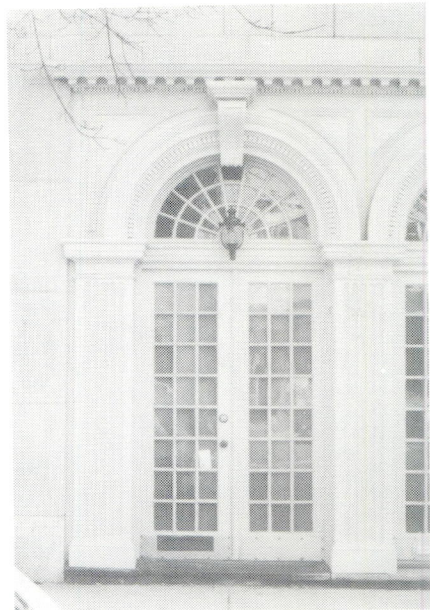
C10. Largest church in  
East Cambridge



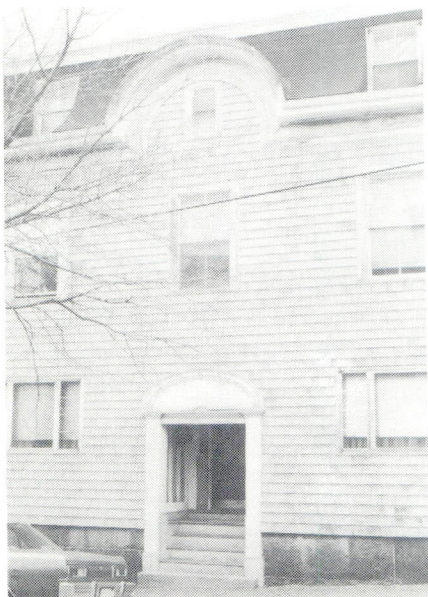
C11. NOT a religious  
symbol



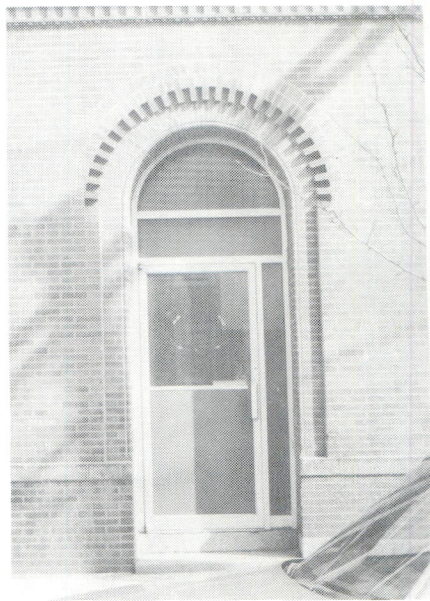
C12. Doubled-arched,  
double doorway



C13. Classical-inspired  
arches



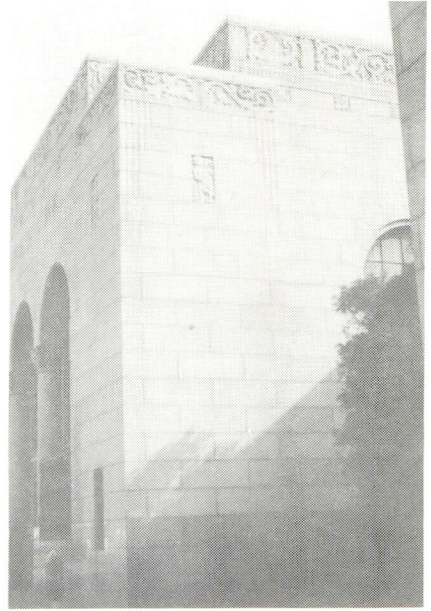
C14. One arch over another



C15. Pattern made by the  
way brick was laid



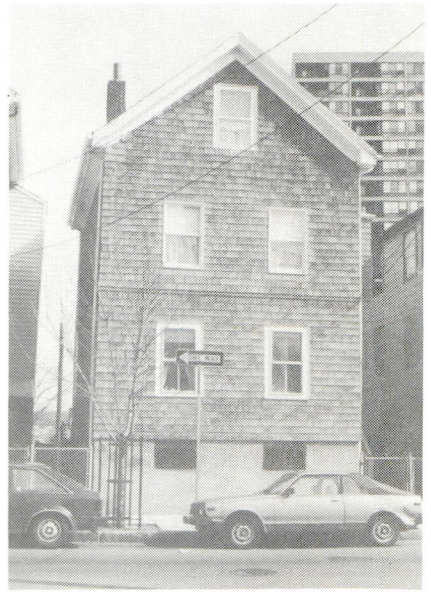
C16. Fancy shingle work



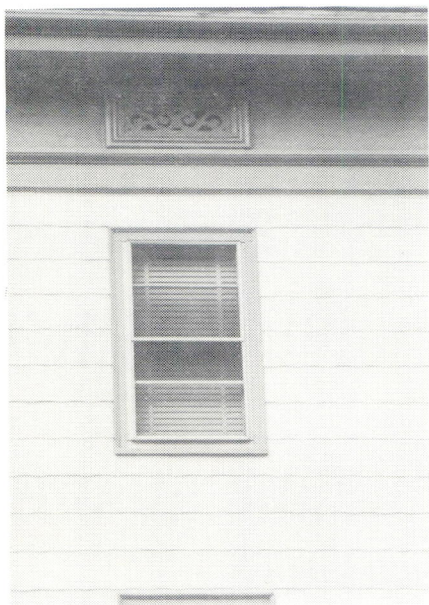
C17. 1930s decoration



C18. Tower like the Italian "campanile"



C19. Mid-19th-century wooden house



C20. Decoration under the eaves



C21. "Panel Brick" style apartment house



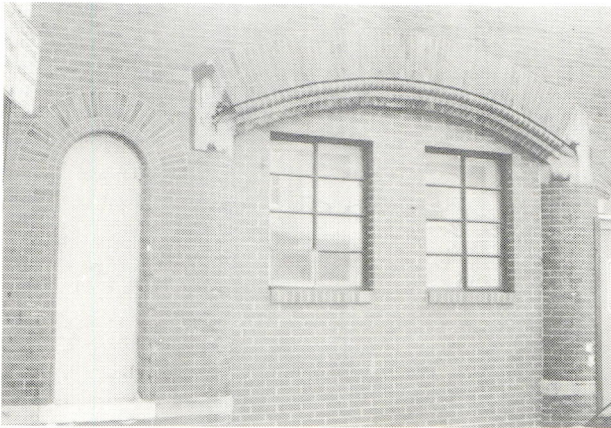
C22. Fading "Gold"



C23. "Panel Brick" cornice



C24. A private deck

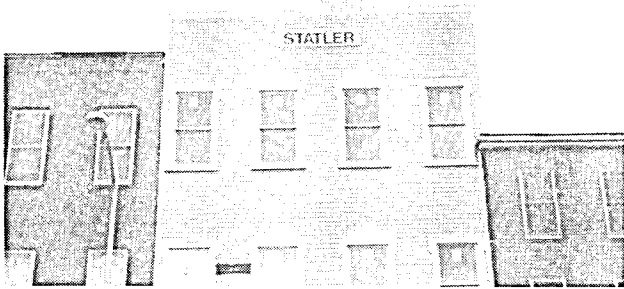


C25. Blocked-up carriage entrance

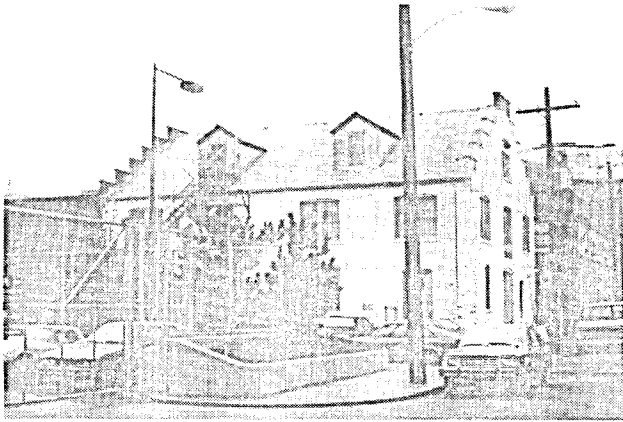


C26. Patterned tiles set in brick





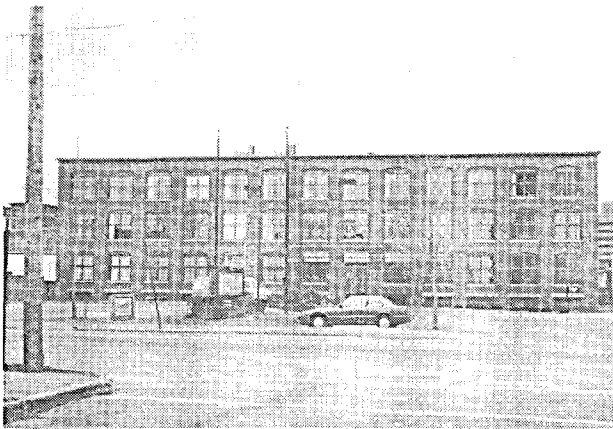
C27. Renewed roof line



C28. Serrated roof line



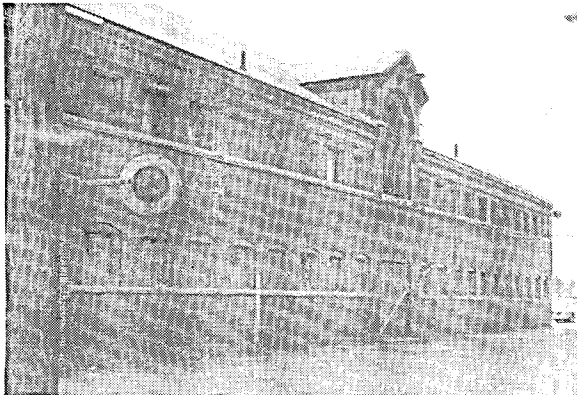
C29. Copper roof



C30. Building in which fishing nets were made



C31. "Watering hole"



C32. Early Cambridge factory