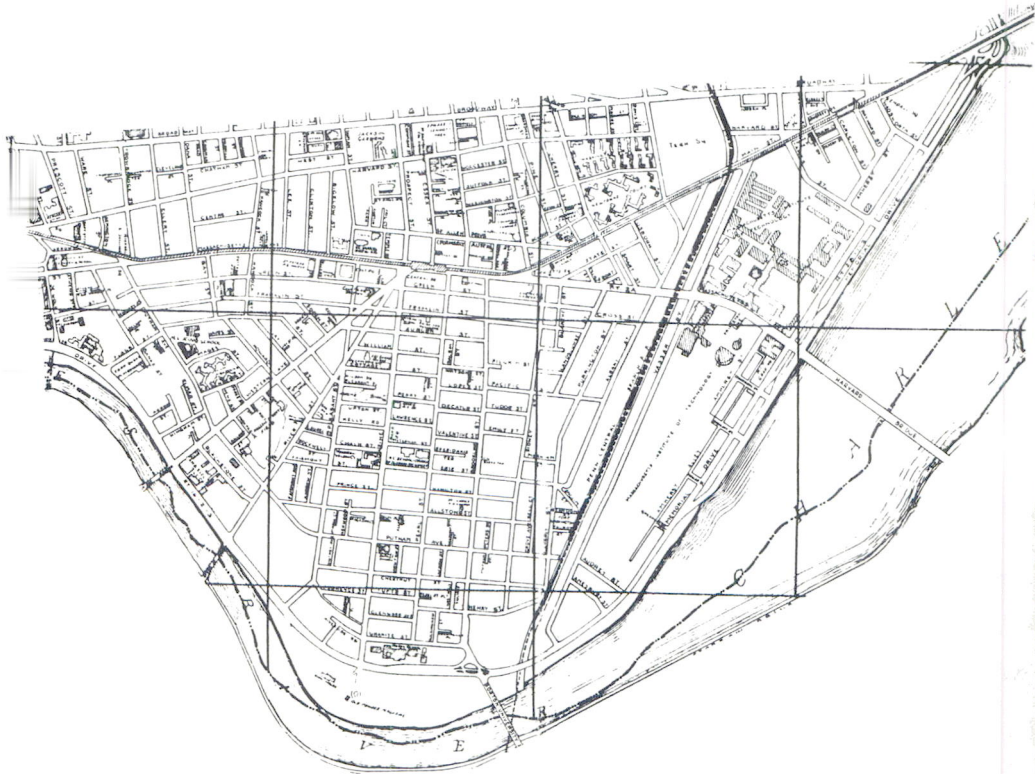


# Cambridgeport

Compiled by Peter J. Bruckner

Photographed by Timothy B. Spears

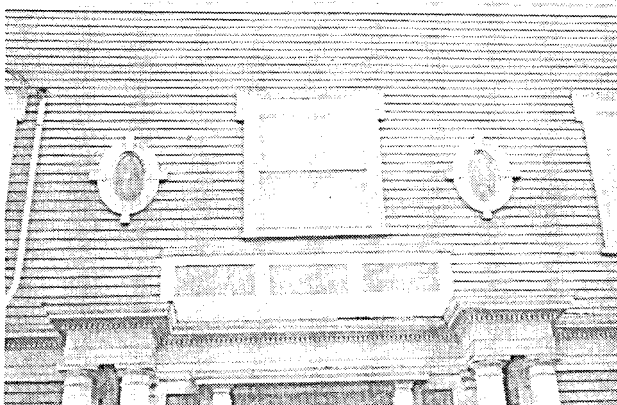




D1. Entries, face to face



D2. Elegant Italianate mansard, with addition



D3. Second-floor "Colonial" windows



D4. Fancy gable and bay



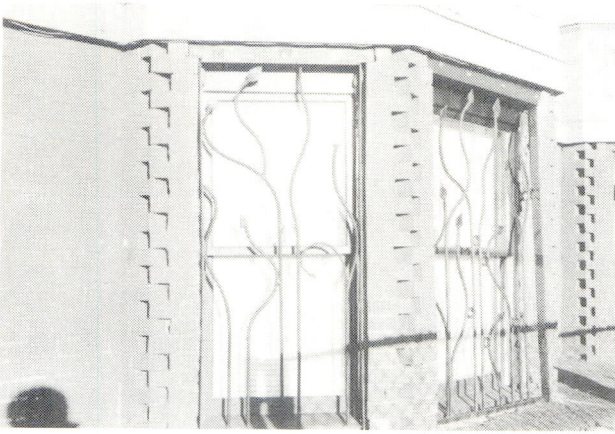
D5. Striking cornice detail



D6. Cut corners



D7. Patterns in glass and wood



D8. Brick patterns in a basement bay



D9. More "modern" first level



D10. Fancy geometry



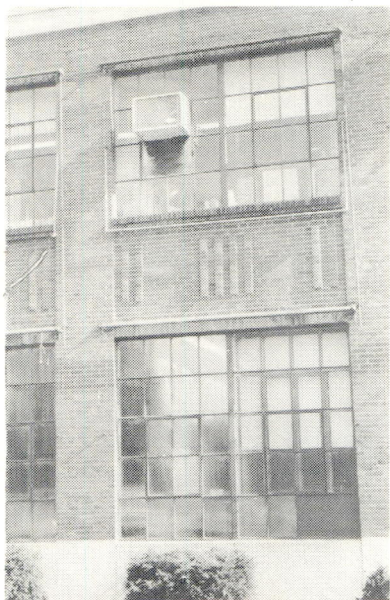
D11. Fancy cut-outs



D12. Classical Revival corner



D13. Hodgepodge of decoration



Brick and window detail



D15. Stained glass side window



D16. Wooden church



D17. Patterns of turned rails



D18. Corner tower



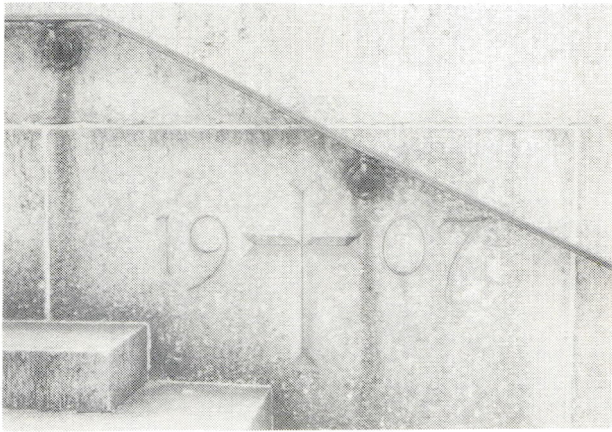
D19. Hefty entrance supports



D20. Terra cotta ornament  
and panel brick details



D21. Date in the roof line



D22. Another date, in stone



D23. "Tracery" holding up a sloping roof

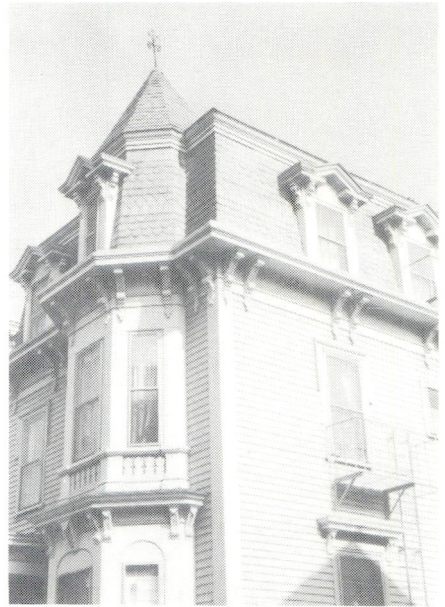


D24. Bouquet of "flowers"





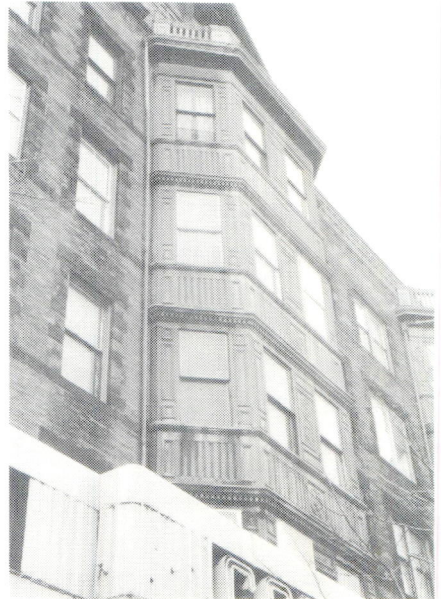
D25. Swags and garlands



D26. Corner turret



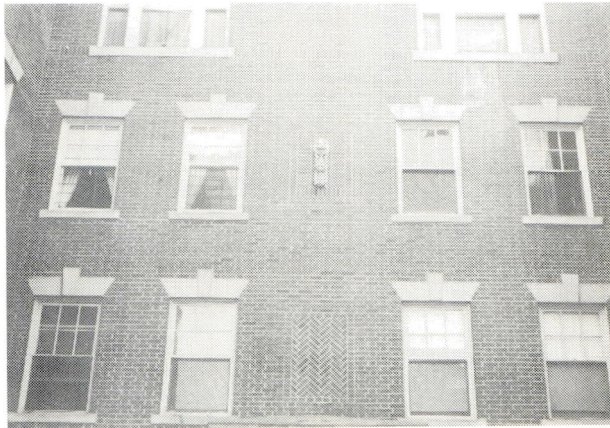
D27. Fancy dormers



D28. Federal Revival bay



D29. Modest "Chateau"



D30. Fancy brickwork in an apartment



D31. Adaptation of a Palladian window