

Architecture

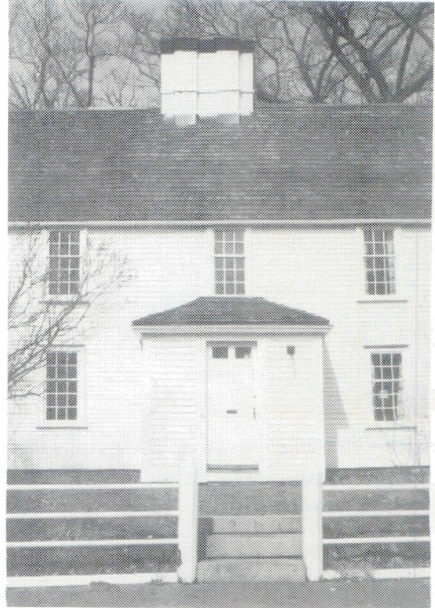
Compiled by Sally Zimmerman

Photographed by Bettina A. Norton

MIX AND MATCH

Listed below are facts about the buildings and places illustrated. Match the facts and the pictures by writing both the correct caption letter and the address by the corresponding photo number on the answer sheet.

- a) The original stable and car barn of the Union Railway Company.
- b) The "Palace" of a "Tory Bishop."

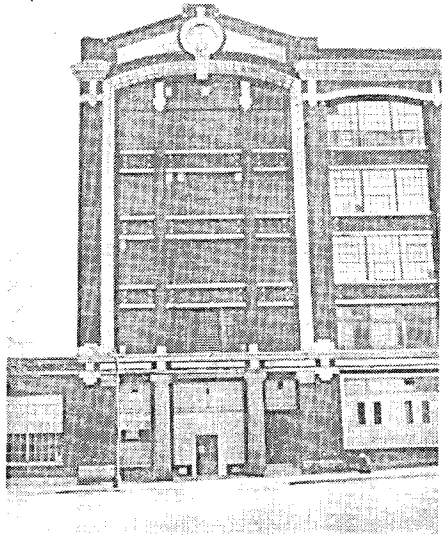


B1

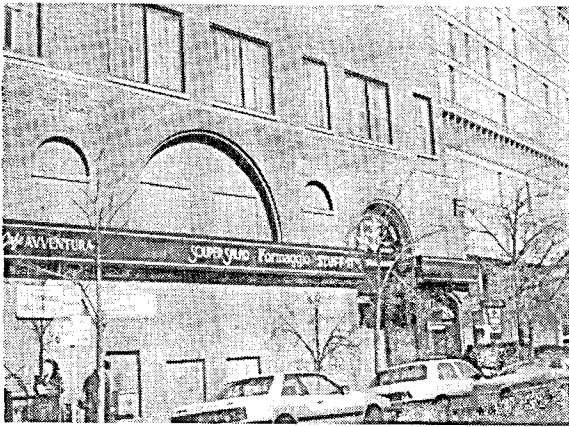


E2

B3

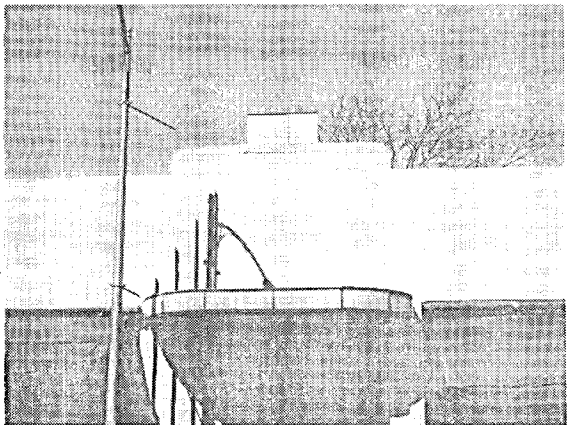


The oldest church in
Cambridge.



B4

- d) A structure
which gave its
name to the
hill on which
it stands.



B5

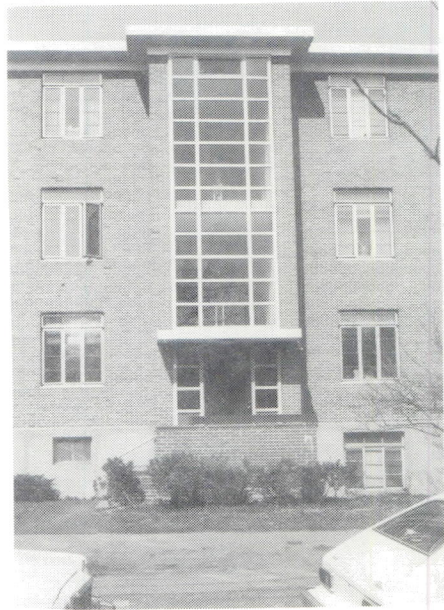
- e) The 1814 house
of Thomas
Dowse, a lead-
ing Cambridge
book lover and
art collector.

B6

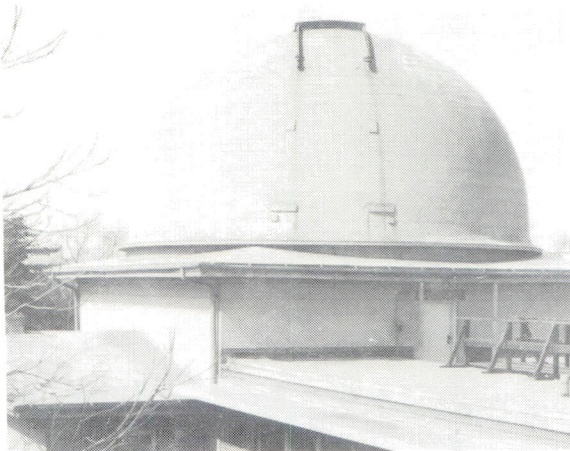


f) A 1775 structure which, though it once had a view of the Charles River, now looks out on railroad tracks and industry.

B7



g) Cambridge's fifth poorhouse, built in 1850.



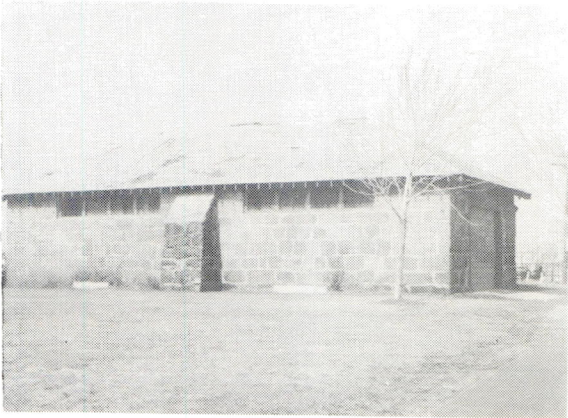
B8

h) The 1913 Ford factory which brought Detroit to Cambridge.



B9

- i) Named for an important mathematician (and governor), the "place where the action was" in 1686.



B10

- j) The White Block (1855), one of Cambridge's earliest and best surviving commercial buildings



B11

- k) One of the oldest houses in Cambridge (ca. 1691).

B12

- 1) The site of Harvard's Botanic Gardens from 1808 to 1949, and now in the midst of specimen trees and plants.



B13

- m) A neon extravaganza when lit up in 1936.



B14

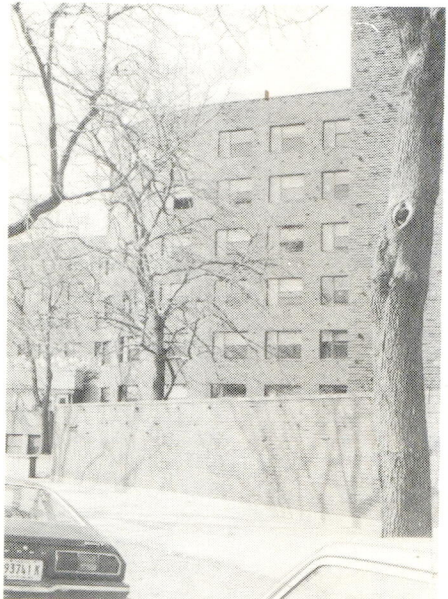
- n) Constructed of stone salvaged from the 1818 Massachusetts powder magazine.



ONE AND ONLY

Cambridge is the home of some famous "firsts" and a few of the country's only buildings by internationally renowned architects. Write the address or building name by the correct number on the answer sheet.

- B15. The only building in the United States by this Swiss modern master.
- B16. Name the architect.

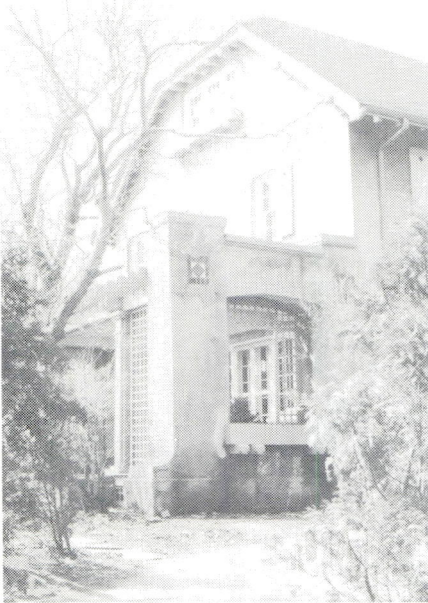


- B17. The location of the receiving end of the first telephone, and also where instant photography was invented by Dr. Land.

- B18. The only building in the United States by this famous Finn.
- B19. Name the architect.

ARCHITECTS' HOUSES

Cambridge has long attracted many prominent architects who built their houses here. Among more than a dozen possible examples are the ones illustrated here. The captions give the architects' more famous works. Match the caption letter with the correct photo number. There is a bonus point for the name of each architect written on the second answer line.



B20
B21

- p) Loeb Drama Center,
Federal Reserve Building
(Boston), and Peabody
School (Cambridge).



B22
B23

- q) Holyoke Center (Harvard), Science
Center (Harvard), Peabody Terrace
(Cambridge).



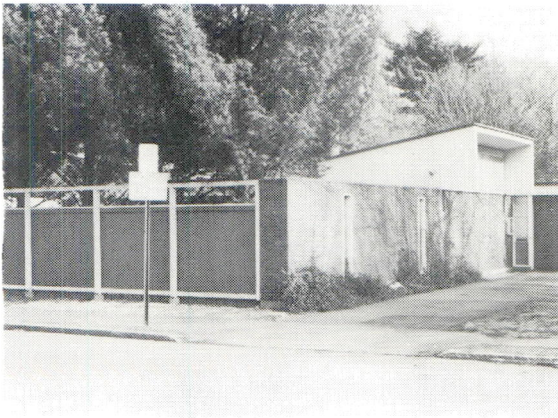
B24
B25

r) International
Place (Boston),
AT&T Building
(New York).



B26
B27

s) Cambridge Post
Office, Cambridge
High and Latin
School, and
Taylor and
Lafayette squares'
fire stations.



B28
B29

t) Memorial Hall
and Weld Hall
(Harvard), and
the Cambridge
Public Library